

Things to know before updating to Total Control 2.0

- A 2.0 upgrade is **permanent**. The system cannot be reverted back to 1.0
 - System upgrade must be performed onsite
 - Not all devices are fully compatible with 2.0 (Please see compatibility chart prior to upgrading)
 - All two-way modules have been updated. New modules must be downloaded and imported into the new software
 - **All graphics** including, category menus, device icons and any custom graphics are updated to the new 2.0 format and shall be deleted and replaced with new default graphics.
 - Total Control 2.0 Driver files are of a new file type (*.cd2). The new driver files are not compatible with 1.0. However, original driver files (*.csd) are compatible with 2.0 but lack the new features.
 - If the 1.0 file is registered for offsite programming, the file must be deleted from the installers account and Re-registered in Accelerator 2.0
-

Quick Steps to Upgrade:

1. **Download** the new URC 2.0 Accelerator **software**
 - a. [Accelerator 2.0 Software](#)
 - b. Install the software and perform a ***“Live Update”***
2. **Download** and **import** all new **Two-way modules** and **restart** the **software**
3. **Open** the existing Total Control **file** to be updated
4. **Review** and **modify Room & Background Images** under *“Room Properties”*
5. Review Graphics in Step 14
6. Download to the entire system Twice (2x)
7. If original file was registered for offsite programming, delete file from installers offsite account, and re-register new file in 2.0

For more detailed instruction on how to perform a 2.0 upgrade, please see details and links below.

Detailed Instruction & Resources

Prerequisite:

In order to convert a current system you'll need to OPEN the file, make necessary changes and re-download with the new Accelerator 2.0. This process is simple but there are some things to be aware of.

Before downloading and upgrading all your existing Total Control Customers to URC 2.0, there are some important things to know:

Total Control 2.0 is a permanent upgrade to a Total Control system and does not allow devices the ability to return to 1.0; so be sure that you and your customer are 100% positive on upgrading.

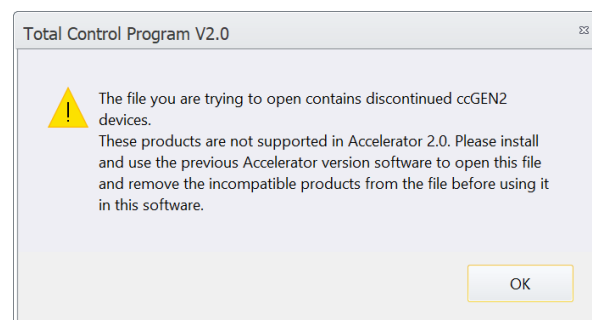
This process must be performed ONSITE (connected to the local network).
Upgrading CANNOT be accomplished using Offsite Programming.

Download, install and update URC Accelerator 2.0 software
[Accelerator 2.0 Software](#)

Compatibility:

Not all Total Control devices are compatible with URC 2.0. Some devices may not work at all, while others function, but do not display the new graphical interfaces. See the compatibility chart [on this page](#), prior to upgrading.

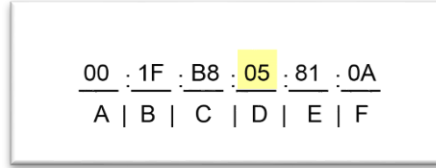
Accelerator 2.0 scans the old file before opening it. If there are any incompatible devices (ccGEN2) or older MRX-10 Advanced System Controllers, a notification is displayed stating to remove the device before opening the file in 2.0



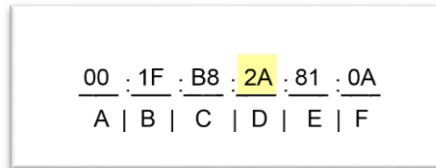
If you receive this message, follow the on-screen directions.

How to check your MRX-10 for compatibility:

Check the MAC address of your MRX-10. The MAC address can be found on a sticker on the side or back of the unit or by going to Step 6: Network Setup.



Older MRX-10 units not compatible with URC 2.0 contain a **05** in location **D** of the MAC Address.



New MRX-10 units compatible with URC 2.0 contain **2A** in location **D** of the MAC Address.

If you are seeking to upgrade your incompatible devices to newer, 2.0 compatible devices, please contact your local URC Sales Manager.

Drivers:

Updating drivers is not necessary when upgrading a system from 1.0 to 2.0 but note, there are several new features within the Drivers of TC 2.0 along with a new file type of (*.CS2). These new driver files do not function with Total Control 1.0, however the 1.0 drivers (*.CSD) remain compatible with 2.0 but lack the new features.

For more about Drivers please see:

Manual:

[Total Control Drivers 2.0](#)

Self-paced online training:

[Total Control 2.0 Self Paced Learning](#)

****Graphics:**

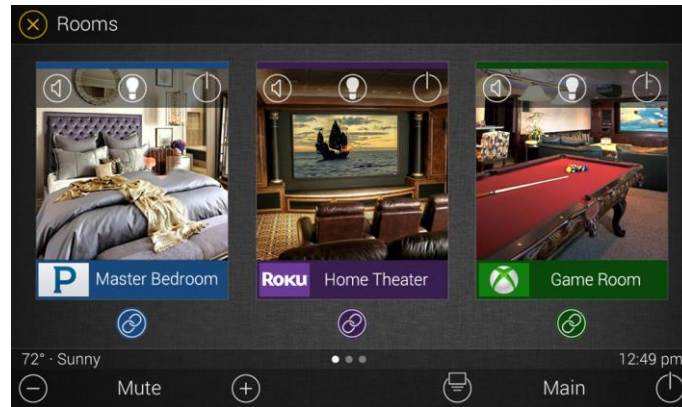
Modifications to graphics may require the most effort when updating to TC 2.0. There are several areas of the program graphically that can be modified/customized within TC 2.0

- All new Main Menu & Device Icons
- Rooms Menu Images
- Backgrounds

Graphics can be modified using the URC Graphics expansion pack, or personalized using custom graphics. Menu items can be swapped on the fly or embedded into custom device drivers.

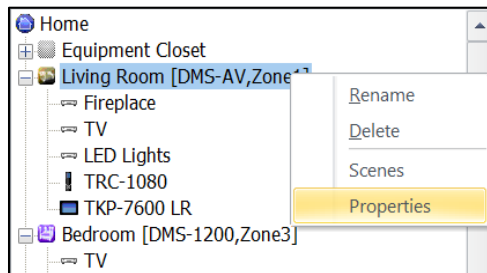
Rooms Menu:

The new Rooms Menus adds a graphic for each room within the menu as well as some basic control functions including Power OFF, Vol +/-/Mute , Room status and an optional Lights OFF button.

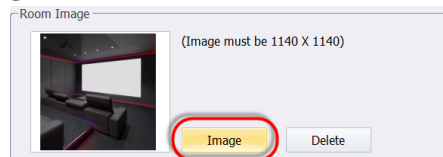


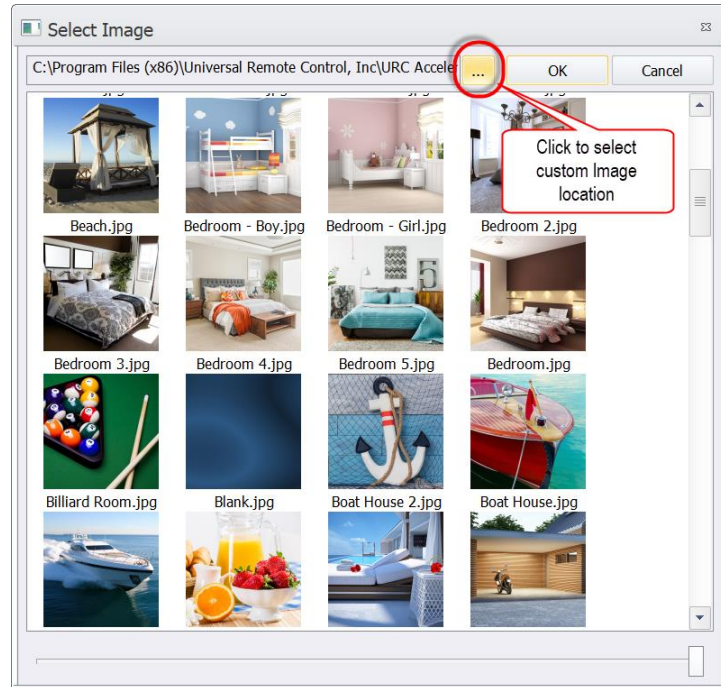
If the Room Name matches a name from the default list in Step 2, then Accelerator chooses a default image. If the room name is not existent the image defaults to a default room image. Follow the steps below to modify a Room image.

- Room images can be modified by **right-clicking** on the Room name in the project tree of **Step 2**, and selecting **Properties**



- Images can be selected from the URC Image library or from a custom location on the PC





- Additional images can be accessed from the [URC 2.0 Expansion Pack](#)
- Custom Room images **must** be **1140 x 1140**

For more about the Rooms Menu please see:

Manual:

[Total Control 2.0 New Features Guide](#)

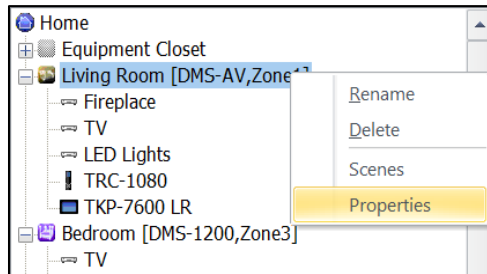
Self-paced online training:

[Total Control 2.0 Self Paced Learning](#)

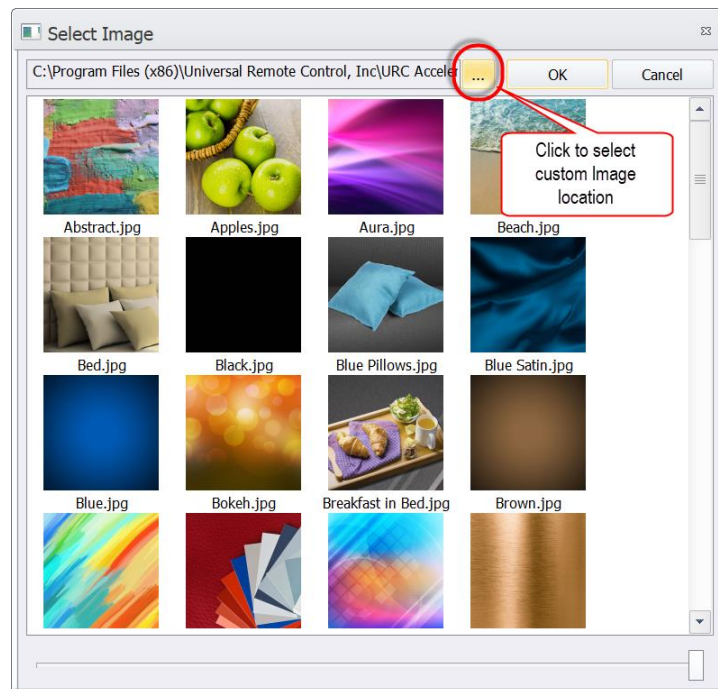
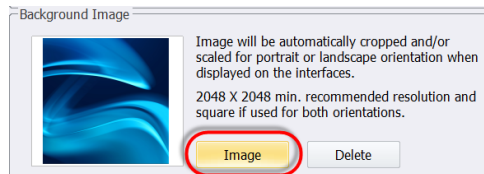
Backgrounds:

Each room in the project may have a custom background that displays on all of the user interfaces accessing the room. Images can be selected from the URC library, URC Graphics expansion pack, or custom images.

- Background images can be modified by **right-clicking** on the Room name in the project tree of **Step 2**, and selecting **Properties**



- Images can be selected from the URC Image library or from a custom location on the PC



- Additional images can be accessed from the [URC 2.0 Expansion Pack](#)

- Custom Room images **must** be at least **2048 x 2048** and no more than **4096 x 4096**

For more about Background images please see:

Manual: [Total Control 2.0 New Features Guide](#)
Self-paced online training: [Total Control 2.0 Self Paced Learning](#)

Main Menu & Device Icons:

Accelerator 2.0 uses all new images for Main men and device icons. Images can be selected from the built-in library, the URC Graphic expansion pack, or custom made graphics. Images can be changed two different ways.

1. Change graphics on-the-fly in **Step 14: Graphics & Themes** by dragging-and dropping images from the library to the on-screen image

OR

2. Embed an image into the devices driver. Default or custom images may be used.

For more about Menu & Device images please see:

Manual: [Total Control 2.0 New Features Guide](#)
Self-paced online training: [Total Control 2.0 Self Paced Learning](#)

Offsite Programming:

To ensure stability using the Offsite programming feature, we highly recommend that you re-register the file after converting it. Start by deleting the old file from within the installers account and re-register in TC 2.0.

For more about Menu & Device images please see:

Manual: [Offsite Programming Guides](#)
Self-paced online training: [Total Control 2.0 Self Paced Learning](#)